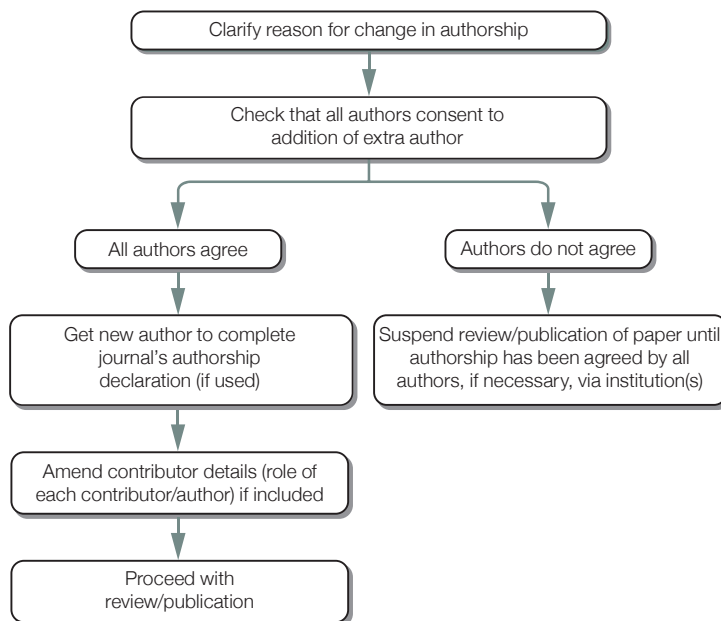


Changes in authorship

(a) Corresponding author requests addition of extra author before publication



Note
Major changes in response to reviewer comments, e.g. adding new data might justify the inclusion of a new author

Developed for COPE by Liz Wager of Sideview (www.lizwager.com)
© 2013 Committee on Publication Ethics
First published 2006

A non-exclusive licence to reproduce these flowcharts may be applied for by writing to: cope_administrator@publicationethics.org