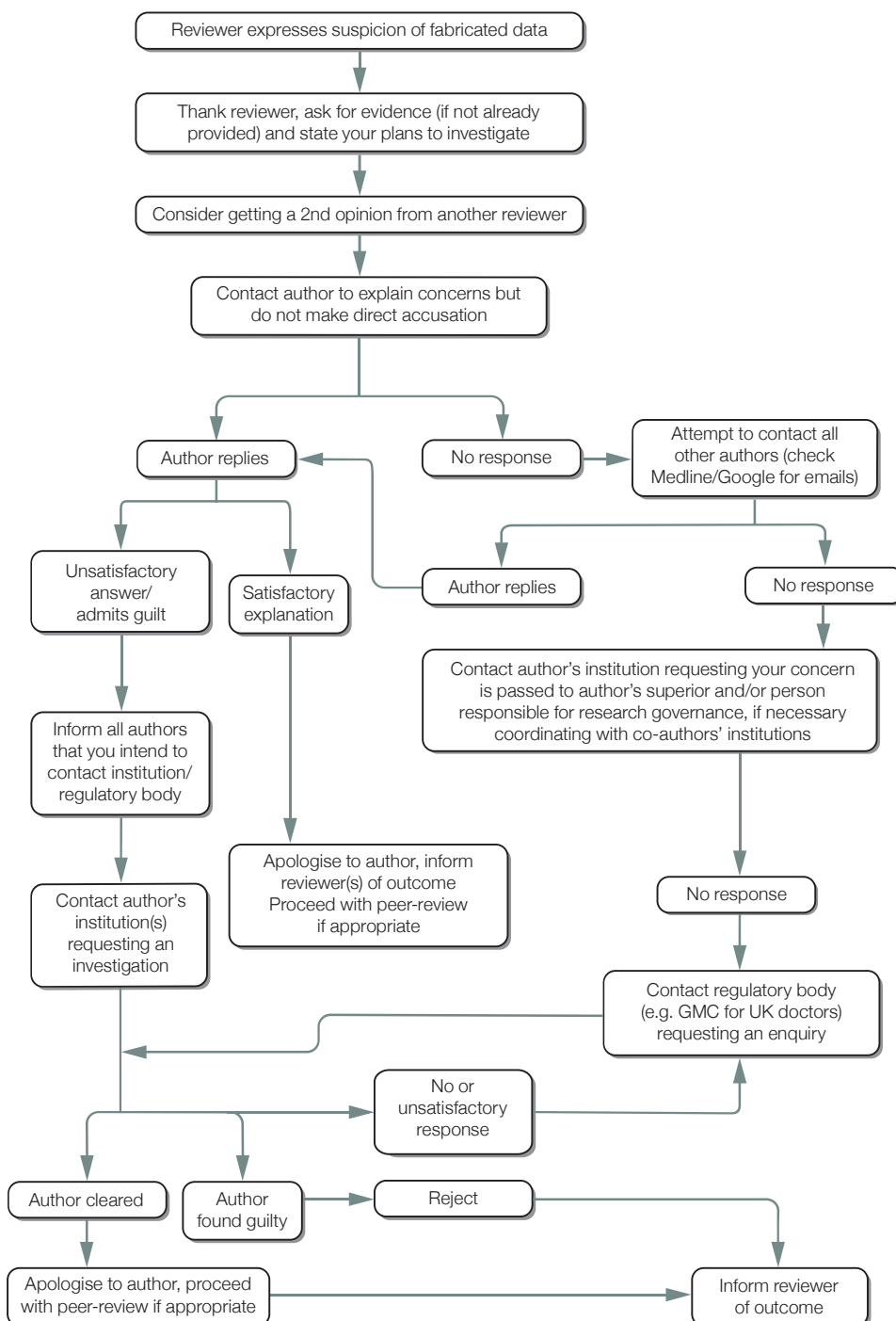


What to do if you suspect fabricated data

(a) Suspected fabricated data in a submitted manuscript



Developed for COPE by Liz Wager of Sideview (www.lizwager.com) © 2013 Committee on Publication Ethics First published 2006

A non-exclusive licence to reproduce these flowcharts may be applied for by writing to: cope_administrator@publicationethics.org